

SPECIFICATIONS SHEET

PRODUCT TYPE : MECHANICAL BUZZER

PRODUCT SERIES : BS2316P-06-C-B

DESCRIPTION : MC BUZZER SINGLE 6VDC PIN ABS SP

ADD LABEL MARKING " INTERVOX " " BS2316P-06-C-B "
& " LF DATE CODE "

COLOR : GRAY

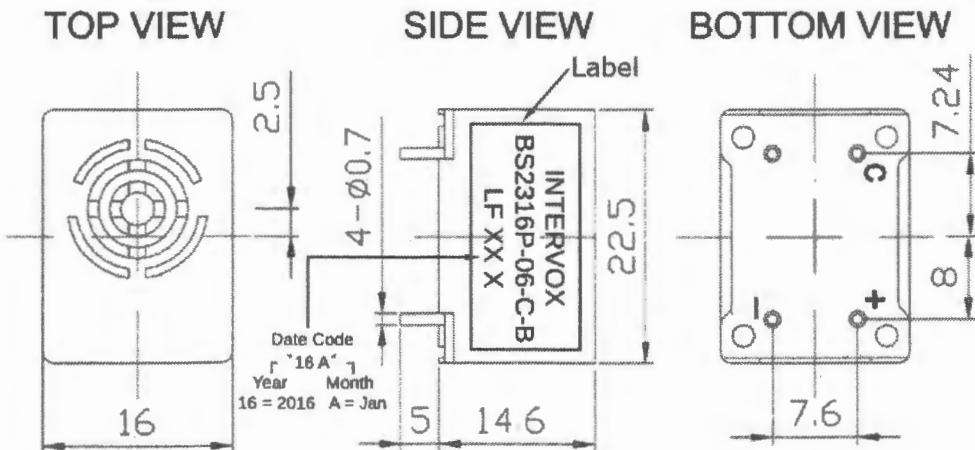
ELECTRICAL SPECIFICATIONS

<u>MODEL NO.</u>	<u>BS2316P-06-C-B</u>	
<u>OPERATING VOLTAGE RANGE</u>	(VDC)	3.0 ~ 8.0
<u>RATED VOLTAGE</u>	(VDC)	6.0
* <u>MAX. RATED CURRENT</u>	(mA)	23.0
<u>MIN. TRIGGER CURRENT</u>	(mA)	3.0
* <u>MIN. SOUND OUTPUT</u>	(dBA/ 30 cm)	70.0
* <u>FREQUENCY</u>	(Hz)	400 ± 100
<u>TONE NATURE</u>		SINGLE
<u>OPERATING TEMPERATURE</u>	(° C)	- 20.0 ~ + 70.0
<u>STORAGE TEMPERATURE</u>	(° C)	- 30.0 ~ + 75.0
<u>TERMINAL</u>		PIN
<u>HOUSING MATERIAL</u>		ABS
<u>WEIGHT</u>	(g)	10.0

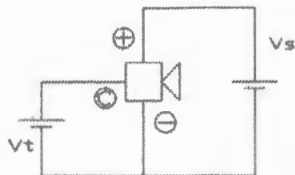
* Value applying at rated voltage

DIMENSIONS

UNIT : mm Tolerance : ± 0.5 mm



Coupled Circuit



Characteristics

Modify :	Date :	By :

Approved By : FG
Date : 14-Jan-2016

Prepared By : LL
Date : 14-Jan-2016